

SDHA Antibody
Mouse Monoclonal Antibody (Mab)
Catalog # AD80114**Specification**

SDHA Antibody - Product info

Application	IHC
Primary Accession	P31040
Reactivity	Human
Host	Mouse
Clonality	Monoclonal
Isotype	IgG
Calculated MW	72692

SDHA Antibody - Additional info

Gene ID	6389
Gene Name	SDHA

Other Names

Succinate dehydrogenase [ubiquinone] flavoprotein subunit, mitochondrial, 1.3.5.1, Flavoprotein subunit of complex II, Fp, SDHA, SDH2, SDHF

Dilution

IHC~~Ready-to-use

Storage

Maintain refrigerated at 2-8°C

Precautions

SDHA Antibody is for research use only and not for use in diagnostic or therapeutic procedures.

SDHA Antibody - Protein Information**Name** SDHA**Synonyms****Function****SDH2, SDHF**

Flavoprotein (FP) subunit of succinate dehydrogenase (SDH) that is involved in complex II of the mitochondrial electron transport chain and is responsible for transferring electrons from succinate to ubiquinone (coenzyme Q) (PubMed:[24781757](#)). Can act as a tumor suppressor (PubMed:[20484225](#)).

Mitochondrion inner membrane

{ECO:0000250|UniProtKB:Q0QF01};

Peripheral membrane protein

{ECO:0000250|UniProtKB:Q0QF01}; Matrix

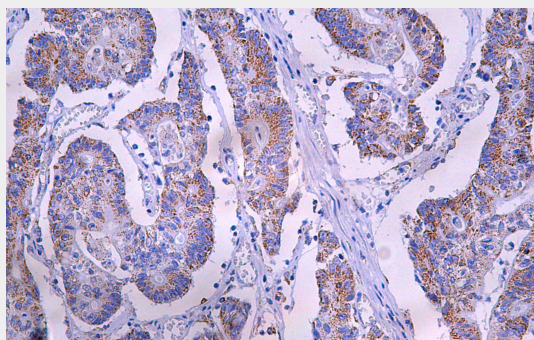
Cellular Location

side {ECO:0000250|UniProtKB:Q0QF01}

SDHA Antibody - Protocols

Provided below are standard protocols that you may find useful for product applications.

- [Western Blot](#)
- [Blocking Peptides](#)
- [Dot Blot](#)
- [Immunohistochemistry](#)
- [Immunofluorescence](#)
- [Immunoprecipitation](#)
- [Flow Cytometry](#)
- [Cell Culture](#)

SDHA Antibody - Images

Immunohistochemical analysis of paraffin-embedded colorectal carcinoma; tissue using AD80270 performed on the Abcarta® FAIP-30 Fully automated IHC platform. Tissue was fixed with formaldehyde at room temperature, antigen retrieval was by heat mediation with a Citrate buffer (pH6.0). Samples were incubated with primary antibody (Ready-to-use) for 15 min at room temperature. AmpSee™ Detection Systems [Abcepta:AR005] was used as the secondary antibody.